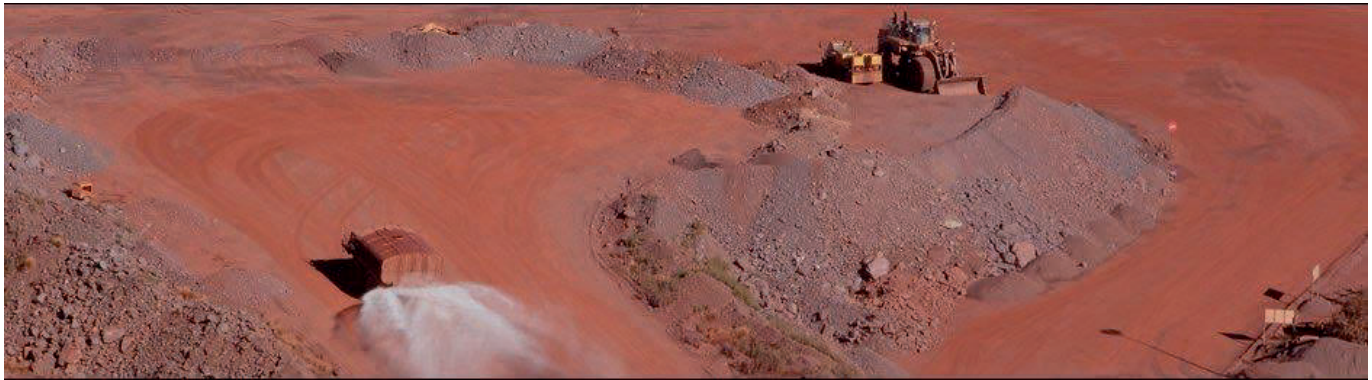


# SHAREATE

**BHP**

Pilbara Iron Mine - W. Australia

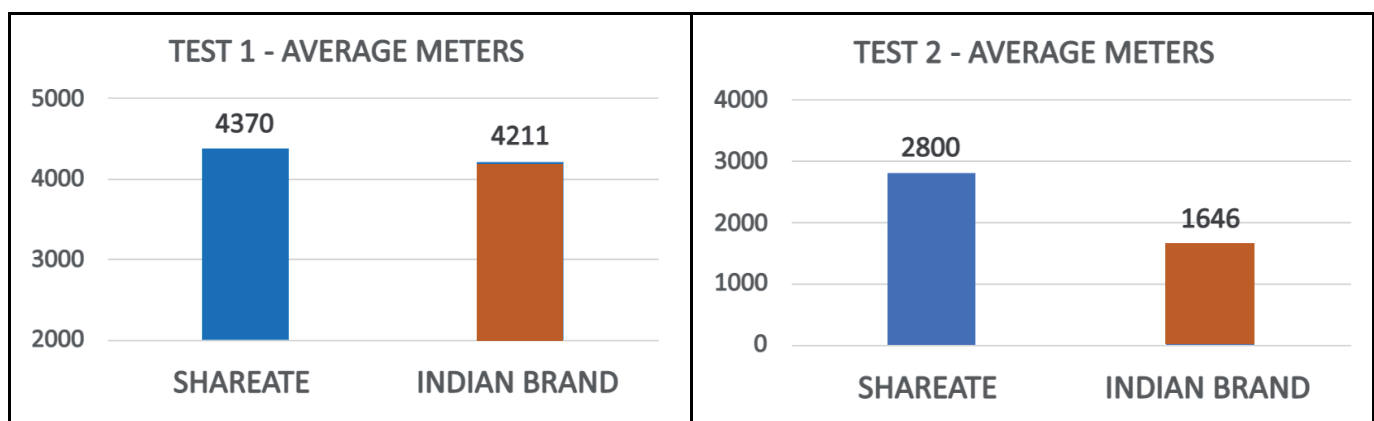


## Mine Description

Western Australia Iron Ore (WAIO) is an integrated system of four processing hubs and five mines, connected by more than 1,000km of rail infrastructure and port facilities in the Pilbara region of northern Western Australia. This region of Australia accounts for approximately 29% of the world's iron ore reserves, and is the world's primary supply of iron ore, accounting for approximately 40% of all global supply.

## Rotary Drill Bit Performance (Controlled Bit Trials)

Average performances of bit trials conducted at Pilbara mines, comparing Shareate's 9.75" SGV645 sealed bearing bit with a well known brand name of rotary air bit supply.



**Shareate's sealed bearing bits outperform standard air bits.  
More meters per bit and the lowest TDC.**